

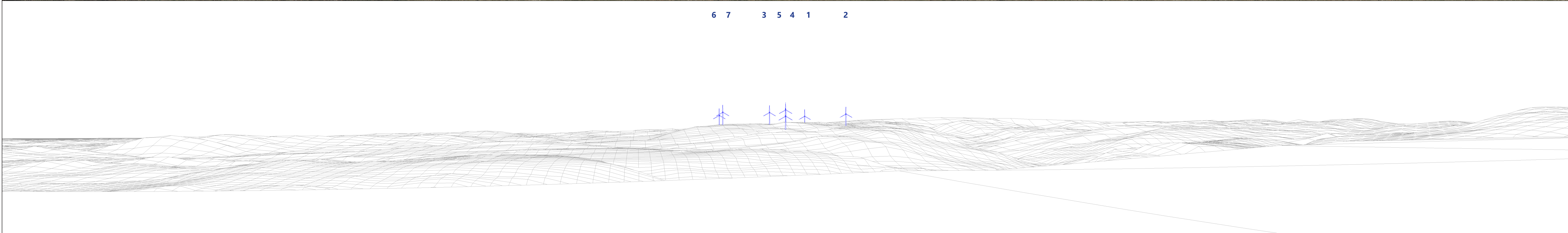
S:\F512-SHARED\Projects\42864 Mynydd y Glyn\Deliver Stage\Design_Technical\Drawings\From_SW_Visual\INDY\42864-WOOD-XX-XX-FG-L-0060_S2_P01.indd Originator: Steve Wright



Baseline photograph

This image provides landscape and visual context only

6 7 3 5 4 1 2



Wireline drawing

View flat at a comfortable arm's length

OS reference:	E 311426 N 188293	Horizontal field of view:	90° (cylindrical projection)	Camera:	Canon EOS 5D Mk2
Ground level:	320m AOD	Principal distance:	522mm	Lens:	50mm (Canon EF 50mm f/1.8)
Direction of view:	279°	Paper size:	841mm x 297mm (half A1)	Camera height:	1.5m AGL
Nearest turbine:	T5 @ 7.3 km	Correct printed image size:	820 x 130mm	Date and time:	22/03/2021 10:44

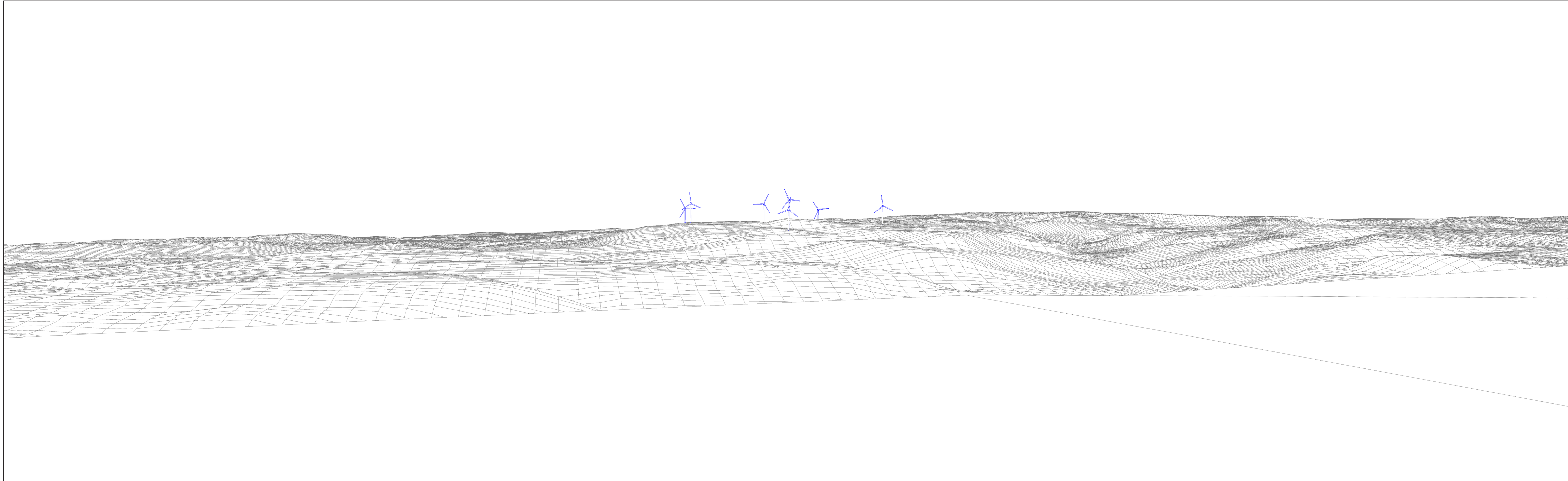
Pennant Walters
Mynydd y Glyn Wind Farm
Draft Environmental Statement

Figure 6.36a
Viewpoint 14: Summit of Mynydd Meio
Existing view and wireline

October 2022



S:\F512-SHARED\Projects\42864 Mynydd y Glyn\Deliver Stage\Design_Technical\Drawings\From_SW_Visual\ND\42864-WOOD-XX-XX-FG-O-L-0060_S2_P01.indd Originator: Steve Wright



Photomontage

View flat at a comfortable arm's length

OS reference:	E 311426 N 188293	Horizontal field of view:	53.5° (planar projection)	Camera:	Canon EOS 5D Mk2
Ground level:	320m AOD	Principal distance:	812.5mm	Lens:	50mm (Canon EF 50mm f/1.8)
Direction of view:	279°	Paper size:	841mm x 297mm (half A1)	Camera height:	1.5m AGL
Nearest turbine:	T5 @ 7.3 km	Correct printed image size:	820 x 130mm	Date and time:	22/03/2021 10:44

Pennant Walters
Mynydd y Glyn Wind Farm
Draft Environmental Statement

Figure 6.36b
Viewpoint 14: Summit of Mynydd Meio
Wireline

October 2022



S:\F512-SHARED\Projects\42864 Mynydd y Glyn\Deliver Stage\Design_Technical\Drawings\From_SW_Visual\NDD\42864-WOOD-XX-XX-FG-CL-0060_S2_P01.indd Originator: Steve Wright



Photomontage

View flat at a comfortable arm's length

OS reference:	E 311426 N 188293	Horizontal field of view:	53.5° (planar projection)	Camera:	Canon EOS 5D Mk2
Ground level:	320m AOD	Principal distance:	812.5mm	Lens:	50mm (Canon EF 50mm f/1.8)
Direction of view:	279°	Paper size:	841mm x 297mm (half A1)	Camera height:	1.5m AGL
Nearest turbine:	T5 @ 7.3 km	Correct printed image size:	820 x 130mm	Date and time:	22/03/2021 10:44

Pennant Walters
Mynydd y Glyn Wind Farm
Draft Environmental Statement

Figure 6.36c
Viewpoint 14: Summit of Mynydd Meio
Photomontage

October 2022

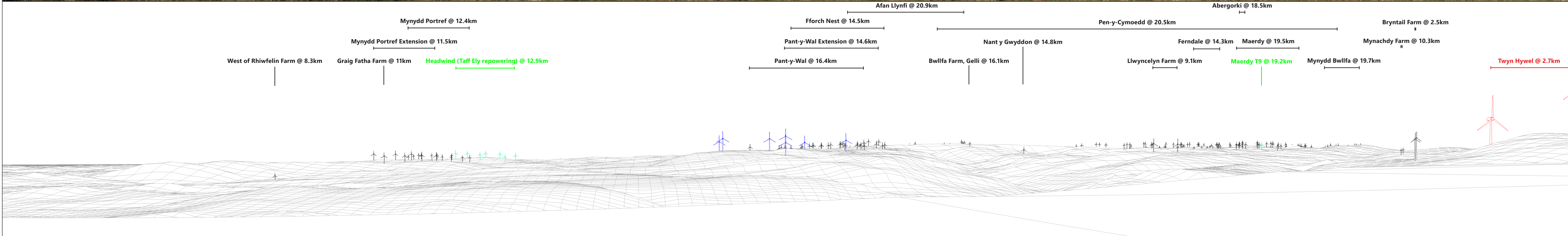


S:\F512-SHARED\Projects\42864 Mynydd y Glyn\Deliverables\Drawings\From_SW_Visual\INDY\42864-WOOD-XX-XX-FG-0-0061_SZ_PO1.mxd
Originator: Steve Wright



Baseline photograph

This image provides landscape and visual context only



Cumulative wireline drawing

View flat at a comfortable arm's length

Wind Farm Key:

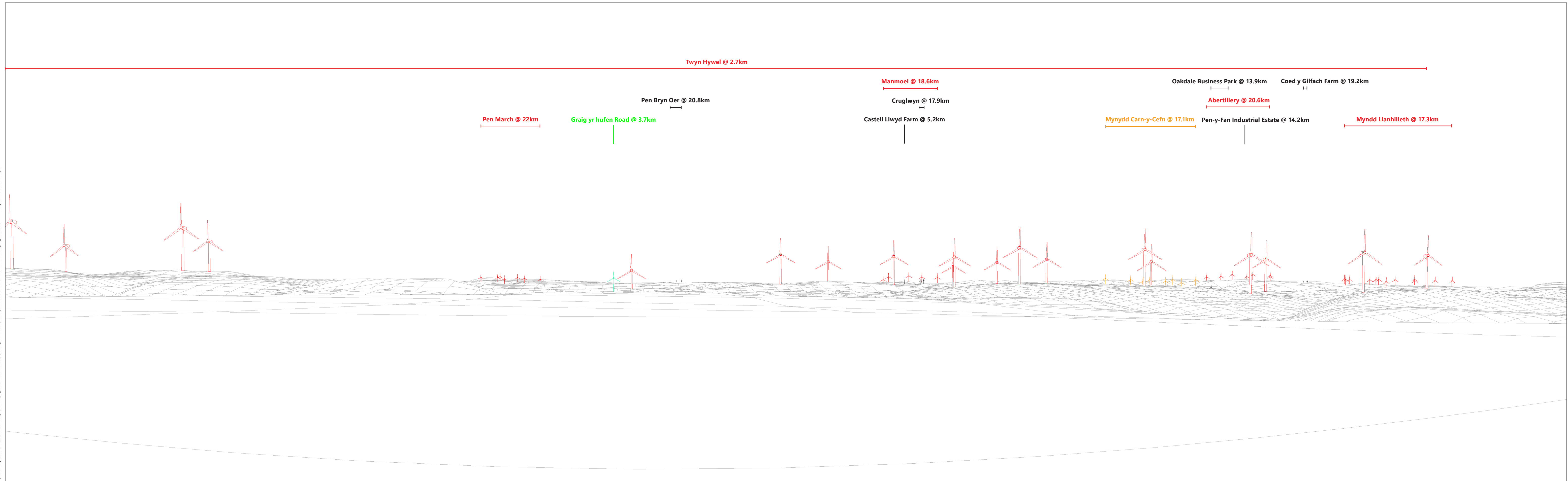
Mynydd y Glyn Wind Farm	Operational	Approved	Planning application	Scoping
-------------------------	-------------	----------	----------------------	---------

OS reference:	E 311426 N 188293	Horizontal field of view:	90° (cylindrical projection)	Camera:	Canon EOS 5D Mk2
Ground level:	320m AOD	Principal distance:	522mm	Lens:	50mm (Canon EF 50mm f/1.8)
Direction of view:	279°	Paper size:	841mm x 297mm (half A1)	Camera height:	1.5m AGL
Nearest turbine:	T5 @ 7.3 km	Correct printed image size:	820 x 130mm	Date and time:	22/03/2021 10:44

Pennant Walters
Mynydd y Glyn Wind Farm
Draft Environmental Statement

Figure 6.36d
Viewpoint 14: Summit of Mynydd Meio
Existing view and cumulative wireline

S:\F512-SHARED\Projects\42864 Mynydd y Glyn\Deliver Stage\Design_Technical\Drawings\From_SW_Visual\IND\42864-WOOD-XX-XX-FG-OL-0061_SZ_PO1.mxd
Originator: Steve Wright



Cumulative wireline drawing					View flat at a comfortable arm's length							
Wind Farm Key: ✈ Mynydd y Glyn Wind Farm ✈ Operational ✈ Approved ✈ Planning application ✈ Scoping		OS reference: E 311426 N 188293 Ground level: 320m AOD Direction of view: 9° Nearest turbine: T5 @ 7.3 km		Horizontal field of view: 90° (cylindrical projection) Principal distance: 522mm Paper size: 841mm x 297mm (half A1) Correct printed image size: 820 x 130mm		Camera: Canon EOS 5D Mk2 Lens: 50mm (Canon EF 50mm f/1.8) Camera height: 1.5m AGL Date and time: 22/03/2021 10:44		Pennant Walters Mynydd y Glyn Wind Farm Draft Environmental Statement		Figure 6.36e Viewpoint 14: Summit of Mynydd Meio Cumulative wireline (site centre plus 90°) October 2022		

S:\F512-SHARED\Projects\42864 Mynydd y Glyn\Deliver Stage\Design_Technical\Drawings\From_SW_Visual\NDD\42864-WOOD-XX-XX-FG-OL-0061_SZ_PO1.mxd Originator: Steve Wright



Cumulative wireline drawing

Wind Farm Key: Mynydd y Glyn Wind Farm Operational Approved Planning application Scoping

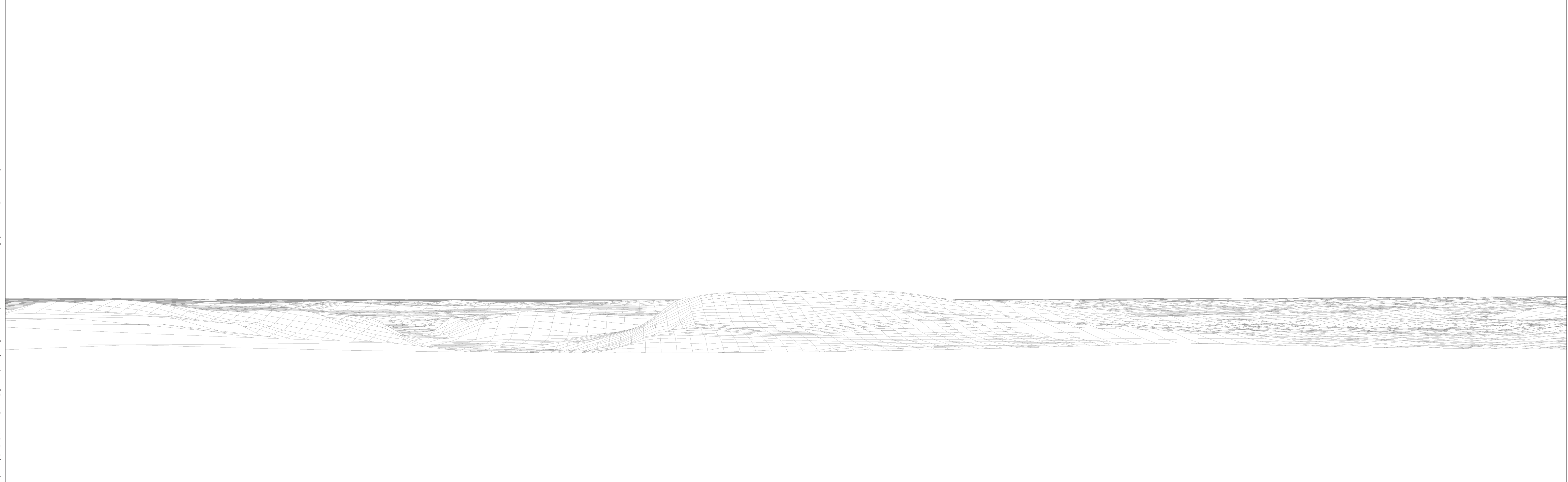
OS reference:	E 311426 N 188293	Horizontal field of view:	90° (cylindrical projection)	Camera:	Canon EOS 5D Mk2
Ground level:	320m AOD	Principal distance:	522mm	Lens:	50mm (Canon EF 50mm f/1.8)
Direction of view:	99°	Paper size:	841mm x 297mm (half A1)	Camera height:	1.5m AGL
Nearest turbine:	T5 @ 7.3 km	Correct printed image size:	820 x 130mm	Date and time:	22/03/2021 10:44

Pennant Walters
Mynydd y Glyn Wind Farm
Draft Environmental Statement

Figure 6.36f
Viewpoint 14: Summit of Mynydd Meio
Cumulative wireline (site centre plus 180°)

October 2022

S:\F512-SHARED\Projects\42864 Mynydd y Glyn\Deliver Stage\Design_Technical\Drawings\From_SW_Visual\NDD\42864-WOOD-XX-XX-FG-OL-0061_SZ_PO1.mxd Originator: Steve Wright



Cumulative wireline drawing

View flat at a comfortable arm's length

Wind Farm Key:	Mynydd y Glyn Wind Farm	Operational	Approved	Planning application	Scoping
-----------------------	-------------------------	-------------	----------	----------------------	---------

OS reference:	E 311426 N 188293	Horizontal field of view:	90° (cylindrical projection)	Camera:	Canon EOS 5D Mk2
Ground level:	320m AOD	Principal distance:	522mm	Lens:	50mm (Canon EF 50mm f/1.8)
Direction of view:	189°	Paper size:	841mm x 297mm (half A1)	Camera height:	1.5m AGL
Nearest turbine:	T5 @ 7.3 km	Correct printed image size:	820 x 130mm	Date and time:	22/03/2021 10:44

Pennant Walters
Mynydd y Glyn Wind Farm
Draft Environmental Statement

Figure 6.36g
Viewpoint 14: Summit of Mynydd Meio
Cumulative wireline (site centre plus 270°)

October 2022

