

Appendix 1 – Core consultation zone

GEOLIST[©] REPORT

To: Grasshopper Communications Ltd, Hannah Dineen

Selection ID: 5778
Date: 26/07/2021

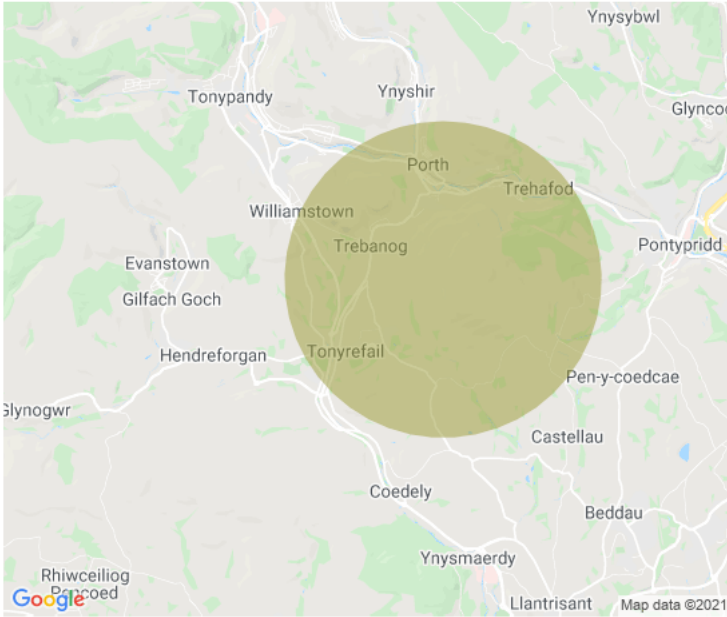
Valid: 21 Days

YOUR SELECTION

YOUR COUNTS

Selection Name: MYG 1.75miles radius s
Selection Type: Circle
Created By: Hannah Dineen
Selection Size: 1.75 square miles
Status: Not Selected

Households 8167
Businesses 218
Total 8385



www.geolist.co.uk

Appendix 2 – Community consultees

Community Consultees

Rhondda Cynon Taf County Borough Council:

- All members

Community Councils

- Tonyrefail & District Community Council
- Pontypridd Town Council

Local MS and MPs

- Mick Antoniw, Welsh Labour MS (Pontypridd)
- Buffy Williams, Welsh Labour MS (Rhondda)
- Alex Davies-Jones MP, Welsh Labour (Pontypridd)
- Chris Bryant MP, Labour (Rhondda)

South Wales Central Regional MSs

- Rhys ab Owen (Plaid Cymru)
- Andrew RT Davies (Leader of the Welsh Conservatives)
- Heledd Fychan (Plaid Cymru)
- Joel James (Welsh Conservatives)

Local organisations/community groups/interest groups

Education

- Porth Community School
- Tonyrefail Community School
- Ysgol Gyfun Cwm Rhondda
- Ynyshir Primary School
- Alaw Primary School
- Cymmer Primary School
- Cymmer Junior School
- Rainbow Room Nursery
- Rhiwgarn Infant Porth
- Sparkles Day Nursery
- Ysgol Gynradd Gymraeg Llwyncelyn
- Hawthorn High School
- Hafod Primary School
- Coedylan Primary School
- Trehopcyn Primary School
- Maes Y Coed Primary School
- Tref-y-Rhyg Primary School
- Bryn Celynnog Comprehensive School
- Ysgol Gymraeg Castellau, Beddau

- Cylch Meithrin Beddau
- Llwynyrwn Primary School, Beddau
- Once Upon a Time Nursery, Beddau
- Ysgol Gynradd Gymraeg Tonyrefail
- Williamstown Primary School
- University of South Wales, Pontypridd Campus

Sports Clubs

- Tonyrefail RFC
- Trebanog FC
- Penrhiwfer AFC
- Porth Ladies Bowls Club
- Porth Harlequins RFC
- AFC Porth
- Hopkinstown Cricket Club
- Pontypridd RFC
- Treforest FC
- Glyncoch RFC
- Treforest Football Club
- Rhydyfelin RFC
- Rhydyfelin AFC
- Llantwit Fardre Sports Club
- Beddau Bowls Club
- Beddau RFC
- Ely Valley Community Sports Park
- Penygraig Boys & Girls Club
- Penygraig Bowls Club

Faith Groups

- St Paul's Church, Porth
- Capel y Cymmer, Porth
- St John's Parish Church, Cymmer
- St David's Church, Tonyrefail
- Bethlehem English Baptist Church, Thomastown
- St Alban's Church, Thomastown
- Castellau Chapel, Beddau
- Elim Pentecostal Community Church, Beddau
- Bethany Baptist Church, Hopkinstown
- Hermon Presbyterian Church, Pontypridd
- The Church of Jesus Christ of Latter-day Saints, Pontypridd
- Temple Baptists, Pontypridd
- St John's Church, Pontypridd
- St David's Uniting, Pontypridd
- Elim Pontypridd Church
- Coedpenmaen Community Church, Pontypridd

- Treforest Gospel Hall
- St Mary's Church, Treforest
- Libanus Chapel, Treforest
- Castle Square United Reformed Church, Treforest

Healthcare

- Dewi Sant Hospital, Pontypridd
- Royal Glamorgan Hospital, Llantrisant
- Cwm Taf Morgannwg University Health Board

Community

- 1st Tonyrefail Scouts
- 1st Beddau Scouts
- 1st Newtown Llantwit Scouts
- Porth library
- Pontypridd library
- Church Village library
- Beddau and Ty Nant Community library
- Waun-wen Community Recreation Centre
- Capel Farm Community Centre
- Hopkinstown Community Hall
- Graig Community Centre
- Treforest Community Centre
- Beddau Community Centre
- Ynysmaerdy Community Centre
- Coedely Community Centre
- Thomastown Community Centre
- Tonyrefail Community Centre

Environmental

- Wildlife Trust South & West Wales
- Valleys Bat Group
- Glamorgan Bird Club
- Campaign for the Protection of Rural Wales

Business

- RCT Chamber of Trade
- South Wales Chamber of Commerce

Regional Stakeholders and Interest Groups

Energy

- Renewable UK Cymru

- Energy Saving Trust
- Cross Party Group on Sustainable Energy

Policy/ best practice

- Institute of Welsh Affairs
- Constructing Excellence Wales
- Sustainable Places Research Institute

Infrastructure

- Dŵr Cymru / Welsh Water
- National Grid
- Western Power Distribution
- British Telecom

Public Services

- South Wales Police
- South Wales Fire and Rescue Service
- Wales Ambulance Services NHS Trust
- Cwm Taf Morgannwg University Health Board
- Royal Air Force
- Wales Air Ambulance

Environment

- The Woodland Trust Wales
- The Bat Conservation Trust
- British Trust for Ornithology (BTO)
- Royal Society for the Protection of Birds (RSPB)
- Friends of the Earth
- Greenpeace

Access

- Open Spaces Society

Agriculture and Farming

- National Farmers Union
- Tenant Farmers Association
- Farmers' Union Wales

Heritage

- Glamorgan-Gwent Archaeological Planning Service
- RCAHMW – the Royal Commission on the Ancient and Historical Monuments of Wales

Economic / Tourism

- Confederation of British Industry
- National Trust

Transport

- Traffic Wales
- Transport for Wales
- Sustrans Cymru

Appendix 3 – Specialist and Statutory consultees

Specialist Consultees and Relevant Persons

Category	Bodies required to be consulted
Specialist consultees	<p>Depending on the type and nature of the development (as described in Schedule 5 of the Order) the following bodies may need to be consulted:</p> <ul style="list-style-type: none"> The Welsh Ministers – e.g. Cadw Natural Resources Wales The Local Highways Authority The railway network operator The Coal Authority The Health and Safety Executive The Office for Nuclear Regulation The Control of Major Accident Hazards (COMAH) competent authority The Theatres Trust The Sports Council for Wales The Canal and Rivers Trust
Relevant persons	<p>If the DNS application includes one or more secondary consents, the body which would normally determine the application must be consulted. This might include:</p> <ul style="list-style-type: none"> The Welsh Ministers The Local Planning Authority The Local Highways Authority The Hazardous Substances Authority Cadw Natural Resources Wales (NRW)

Appendix 4 – Newsletter



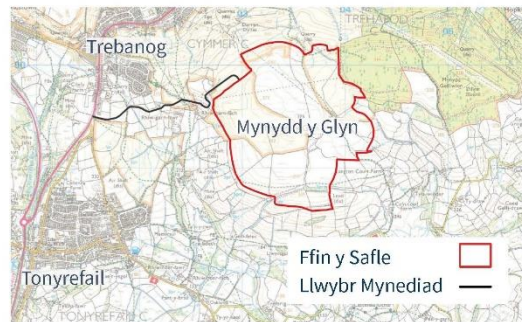
Mae Pennant Walters yn datblygu cynigion ar gyfer fferm wynt ym Mynydd y Glyn, 3km i'r gorllewin o Bontypridd yn Rhondda Cynon Taf.

Wedi'i leoli yn Hirwaun, mae Pennant Walters wedi datblygu, adeiladu ac erbyn hyn mae'n gweithredu chwe fferm wynt a rhywfaint o solar yn Ne Cymru, gan gynhyrchu cyfanswm o 127MW, gan ei gwneud yn ddatblygwr ynni adnewyddadwy cartref mwyaf Cymru.

Ein dull yw datblygu perthnasoedd hirhoedlog gyda'r cymunedau lleol yr ydym yn gweithredu ynddynt. Rydym yn ymgysylltu'n gynnar â'n cynigion ar gyfer Fferm Wynt Mynydd y Glyn i roi cyfle i bobl leol ddarganfod mwy a dylanwadu ar gynllun y fferm wynt. Mae mwy o wybodaeth am y cynigion ar y tudalennau canlynol.

I ddarganfod mwy a thrafod y cynigion gydag aelodau o dîm y prosiect, dewch i'n harddangosfeydd cyhoeddus:

Public exhibitions	
Dydd Iau 11 Tachwedd	Dydd Sadwrn 13 Tachwedd
2pm - 8pm	10am - 2pm
Canolfan Adnoddau Cymunedol Capel Heol Ty Llwyd Tonyrefail CF39 8LW	Canolfan Hamdden Gymunedol Waun Wen Rhiwgarn Rd Trebanog CF39 9LX



Uchod: Cynllun lleoliad y safle

Gan y gallai rhyw fath o gyfyngiadau Covid fod mewn lle ar adeg yr arddangosfa gyhoeddus, **cofrestrwch eich diddordeb** mewn mynychu a'ch amser/dyddiad dewisol trwy ein ffonio neu anfon e-bost atom - gweler y manylion cyswllt ar y dudalen gefn. Yna byddwn yn cysylltu â chi ynghylch unrhyw ofynion diogelwch a'ch slot amser cyn y digwyddiad.

Fel arall, gallwch weld y byrddau arddangos ar-lein (o 11 Tachwedd) a rhoi eich adborth ar wefan y prosiect: www.mynydd-y-glyn.co.uk

Cyflwynwch eich sylwadau erbyn 30 Tachwedd 2021.

Cam cynnar iawn yn y prosiect yw hwn ac nid yw union nifer y tyrbinau (mwyafswm o saith) a'u lleoliad yn y cynllun llinell goch wedi'i bennu eto. Bydd hyn yn cael ei lywio gan adborth o'r ymgysylltu cynnar ac astudiaethau parhaus. Bydd y cynigion manwl yn sail i'r ymgynghoriad statudol yng Ngwanwyn/Haf 2022.



Y safle

Mae'r safle wedi'i lleoli o fewn Rhondda Cynon Taf ar lwyfandir yr ucheldir gydag ochrau llethrog serth, 3km i'r gorllewin o Bontypridd.

Felly d'fllnir ar hyn o bryd, mae'n safle'n ymestyn i oddeutu 200 hecтар, ac mae'n cynnwys lwyfandir o laswelltir asid lled well helaeth a ddelnyddir ar gyfer por. Dethydlir y d'fllnir enhangach o amgylch y safle yn bennaf ar gyfer por, gyda chofrestr conwydd o anghyfa'n cael ei reoli ar gyfer coedwigiaeth ac aneddiadau trefol bach.

Cefn mynyddiad i'r safle arwy'n biferddol gy'ceddus nai l'alo ddoctau Abertawe neu Ffryste.

Y cynigion

Ar hyn o bryd mae e'n cynigion ar gyfer Fferm Wynnt Mynydd y Glyn yn cynnwys:

- nyddal saih tyrbih gwyn gydag uchder l'ain uchaf o 180m
- l'ais orsaf a llrawsnewidydd
- ardal adeiladu dros dro
- swyddfeydd safle adeiladu dros dro
- badiau craen a chebiau
- traclau mynediad

Amcangyfrifir y cydd y Fferm Wynnt Mynydd y Glyn yn cynhyrchu hyd at 42MW o drydan, sy'n cyfateb i ddarparu digon o bŵer i ddiwallu anghenion trydan blynedd, oddeutu 32,000 o gartio.

Dy'arwydd y Fferm Wynnt Mynydd y Glyn wedi'i ddiroddol o 33 mlynedd, gan al'orio ym' adnewyddadwy i'r Grid Cefn-draethrol.

Mae gan Pennant Waters gyming derbynol oddi wrth Western Power Distribution am gyfylliad 33 kV yn Jopel Boat. Byddai'r cysylltiad yn cynnwys 1.5km o line l'newydd ar boblon pren a 7.5km arell o dan y ddoctau sy d'wy'fllnir yn nyddwalch p'fllnydd.

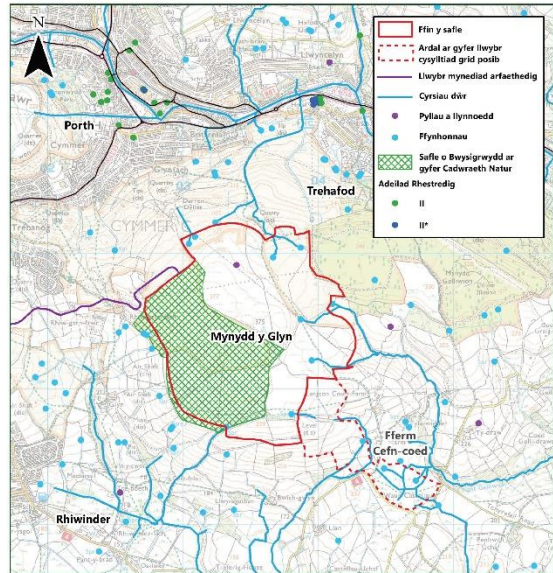
Ystyriaethau allweddol

Cyfyngiadau ar y safle: Mae argenni'n ystyriedd nifer o gyfyngiadau wrth im'idda'byggy'cy'llu'iau marw ar gyfer Fferm Wynnt Mynydd y Glyn. Mae'n thain yn cynnwys coedwigiaeth, nodweddion d'neredd, safleoedd o'barmywiacth, Hwllau Tramwy Cy'ceddus, ffordd cludo, a Th' Mynyddiad Agored. Felly bydd ardal derbynol y safle yn llawer l'ain a'r 200 hecтар yn ydym yn ei astudio a hyn o bryd.

Asesiad Effaith Amgylcheddol: L'r mwy'n helzu' gy' o nifer a l'osolad y tyrbinau gwyn, traclau, mynediad ac is'orsaf, rydym yn cynnal as'ed'laethau a rystod o faterion amgylcheddol gan gynnwys effaith t'wedd a gwelddol, b'barmywiacth, cylch y ddaear, sŵn a chymdeithaseg.

Buddion i'r Gymuned: Mae'n cynnwedau y mae o'n Ffermydd gwyn yn gwe' hreda ynddynt yn bwysig i'ni. Rydym yn gwe' hreda Cro'fa Gymunedol ar gyfer poblon o'n presiectau ffermydd gwyn, sy'n awd'foddi arian yn y cymunedau Leol.

Ar gyfer Fferm Wynnt Mynydd y Glyn rydym yn ystyriedd nifer o ffordd' weinyddu i'r Gronfa Gymunedol, un yw sefydlu Cwm' Budd Cymunedol (CCBC) i ddyrannu cylid yn' lly'yddo' bro'octau cynnwys lleol.



Uchod: Cynllun Safle Darngoso



Cefndir polisi

Ym mis Ebrill 2019, cyhoeddodd Llywodraeth Cymru argyfwng hinsawdd a chyhoeddodd ei Cymru'r Dyfodol: y cynllun cenedlaethol 2040, a fabwysiadwyd ar ddechrau 2021. Mae safle Mynydd y Glyn yn Rhondda Cynon Taf yn gorwedd i'r gogledd o Ardal a Aseswyd ymlaen llaw ar gyfer darparu ffermydd gwynt.

Mae Cymru'r Dyfodol: y cynllun cenedlaethol 2040 yn darparu fframwaith polisi cadarnhaol ar gyfer ynni adnewyddadwy. Oherwydd y gefnogaeth bolisi cadarnhaol hon a'r ffaith bod Fferm Wynt arfaethedig Mynydd y Glyn gryn bellter o Fannau Brycheiniog ac unrhyw Ardal o Harddwch Naturiol Eithriadol y mae Pennant Walters o'r farn y gallai'r safle fod yn addas ar gyfer fferm wynt ar y tir. Bydd astudiaethau ac ymchwiliadau pellach yn helpu i sefydlu addasrwydd y safle yn erbyn ystod eang o feini prawf amgylcheddol.

Gan y bydd y Fferm Wynt arfaethedig yn cynhyrchu mwy na 10MW fe'i diffinnir fel Datblygiad o Arwyddocâd Cenedlaethol (DNS) a bydd Arolygydd yn ei ystyried cyn cael ei benderfynu gan Weinidogion Cymru.

Mae Cyngor Bwrdeistref Sirol Rhondda Cynon Taf a'r cymunedau lleol yn ymgynghorwyr allweddol a byddwn yn ymgymryd ag ymgysylltiad ac ymgynghoriad helaeth â chynghorwyr lleol, rhanddeiliaid a thriogion wrth inni ddatblygu ein cynlluniau.

Cysylltwch â ni

Hoffem glywed eich barn ar y cynigion sy'n dod i'r amlwg ar gyfer Fferm Wynt Mynydd y Glyn. Rhowch wybod eich barn cychwynnol trwy:

- Gwblhau'r ffurflen adborth yn yr arddangosfa gyhoeddus neu ar-lein yn : www.mynydd-y-glyn.co.uk
- Galw: **01443 548032**
- Ebst: consultation@mynydd-y-glyn.co.uk
- Ysgrifennu at: **Freepost GRASSHOPPER CONSULT** (nid oes angen stamp na chyfeiriad pellach)

Bydd y manylion cyswllt hyn yn eich rhoi mewn cysylltiad â Grasshopper Communications, sy'n rheoli'r ymgynghoriad.



PENNANT
WALTERS

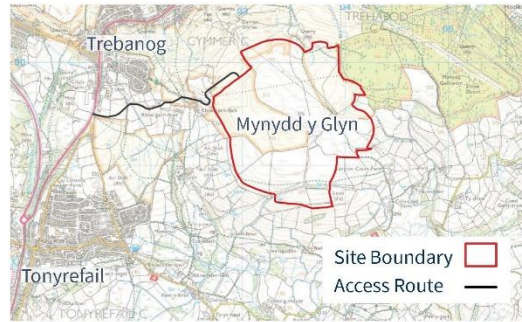


Pennant Walters is developing proposals for a wind farm at Mynydd y Glyn, 3km west of Pontypridd in Rhondda Cynon Taf.

Based in Hirwaun, Pennant Walters has developed, built and now operates six wind farms and some solar in South Wales, generating a total of 127MW, making it Wales' largest home-grown renewable energy developer.

Our approach is to develop long-lasting relationships with the local communities in which we operate. We are carrying out early engagement on our proposals for Mynydd y Glyn wind farm to give local people the opportunity to find out more and influence the layout of the wind farm. More information on the proposals can be found on the following pages.

To find out more and discuss the proposals with members of the project team, come along to our public exhibitions:



Above: Site Location Plan

As some form of Covid restrictions may be in place at the time of the public exhibition, **please register your interest** in attending and your preferred time/date by calling or emailing us - please see contact details on the back page. We will then contact you regarding any safety requirements and your timeslot in advance of the event.

Alternatively, you can visit our online exhibition (from 11 November) and give your feedback via the project website: www.mynydd-y-glyn.co.uk

Please submit your comments by 30 November 2021.

The project is at a very early stage and the exact number of turbines (seven is the maximum) and their location within the redline plan has not been determined yet. This will be informed by feedback from the early engagement and ongoing studies. The detailed proposals will form the basis of the statutory consultation in Spring/Summer 2022.

Public exhibitions	
Thursday 11 November 2021	Saturday 13 November 2021
2pm - 8pm	10am - 2pm
Capel Community Resource Centre Heol Ty Llwyd Tonyrefail CF39 8LW	Waun Wen Community Recreation Centre Rhiwgarn Road Trebanog CF39 9LX



The site

The site lies within Rhondda Cynon Taf and is located on an upland plateau with steep sloping sides, 3km west of Pontypridd.

As currently defined, it extends to approximately 200 hectares, and comprises a patch of extensive semi-improved acid grass, and is used for grazing livestock. The wider landscape surrounding the site is predominantly used for livestock grazing with plantation conifer woodland managed for forestry and small human settlements.

The site will be accessed via the public highway either from Swansea or Bristol docks.

The proposals

Our proposals for the Mynydd y Glyn Wind Farm currently include:

- Up to seven wind turbines with a maximum blade height of 280m
- Substation and transformer housing
- Temporary construction compound
- Temporary site offices
- Crane pads and cabling
- Access tracks

It is estimated that the Wind Farm will generate up to 42MW of electricity, which is equivalent to providing enough power to meet the annual electricity needs of approximately 87,000 homes. The Wind Farm will be designed with an operational life of 30 years, exporting renewable energy to the National Grid.

Pennant Trefos has an accepted grid offer from Western Power Distribution for a 33kV connection at Jiper Boat. The connection would comprise 1.5km of overhead on wooden poles and a further 7.5km underground via ducting in the highway network.

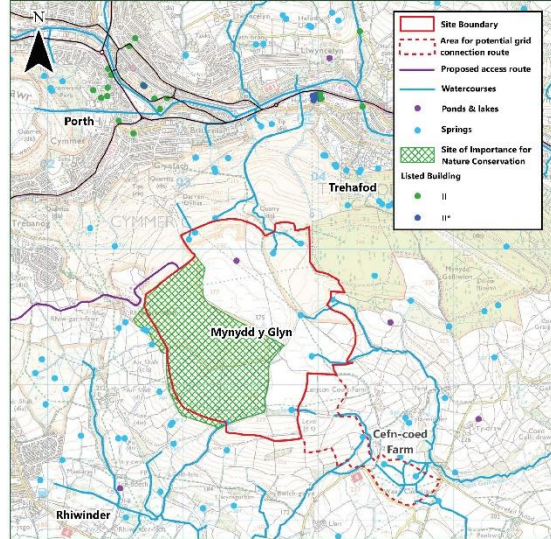
Key considerations

Site constraints: There are a number of constraints that we will need to take into consideration as we develop the detailed plans for the Mynydd y Glyn Wind Farm. These include forestry, landscape features, biodiversity sites, Public Rights of Way, haul roads, and Open Access Land. The final site area will therefore be much smaller than the 200 hectares we are currently studying.

Environmental Impact Assessment: To help inform the number and location of the wind turbines, access tracks and substation, we are carrying out studies on a range of environmental issues including landscape and visual impact, biodiversity, ground conditions, noise and socioeconomics.

Community benefits: The communities in which our wind farms operate are of paramount to us. We operate a Community Fund for each of our wind farm projects, which invests money into the local communities.

For Mynydd y Glyn Wind Farm, we are considering a number of ways to administer the Community Fund; one is to set up a Community Interest Company (CIC) to allocate funds annually to local qualifying projects.



Above: Indicative Site Constraints Plan



Policy background

In April 2019, the Welsh Government declared a climate emergency and published its Future Wales: The National Plan 2040, which was adopted at the start of 2021. The Mynydd y Glyn site in Rhondda Cynon Taf lies to the north of an identified Pre-Assessed Area for the provision of wind energy.

Future Wales: The National Plan 2040, provides a positive policy framework for renewable energy. It is because of this positive policy support and the fact that the proposed Mynydd y Glyn Wind Farm is some distance from the Brecon Beacons and any Area of Outstanding Natural Beauty that Pennant Walters considers that the site could be suitable for an onshore wind farm. Further studies and investigations will help establish the site's suitability against a wide range of environmental criteria.

As the proposed Wind Farm will generate more than 10MW it is defined as a Development of National Significance (DNS) and will be considered by an Inspector before being determined by Welsh Ministers.

Rhondda Cynon Taf County Borough Council and the local communities are key consultees, and we will be undertaking engagement and consultation with local councillors, stakeholders and residents as we develop our plans.

Contact us

We would like to hear your views on the emerging proposals for the Mynydd y Glyn Wind Farm. Please let us know your initial thoughts by:

- Completing the feedback form at the public exhibition or online at: www.mynydd-y-glyn.co.uk
- Calling **01443 548032**
- Emailing consultation@mynydd-y-glyn.co.uk
- Writing to **Freepost GRASSHOPPER CONSULT** (no stamp or further address required)

These contact details will put you in touch with Grasshopper Communications, who are managing the consultation.



PENNANT
WALTERS

Appendix 5 - Consultation Summary Document



Mae Pennant Walters yn datblygu cynigion ar gyfer fferm wynt ar safle ym Mynydd y Glyn, i'r gorllewin o Bontypridd yn Rhondda Cynon Taf.

Mae barn y gymuned leol yn bwysig i ni ac, wrth i ni ddechrau'r prosiect, rydym am gyflwyno ein hunain a darparu gwybodaeth am ein cynigion sy'n dod i'r amlwg.

Rydym hefyd am achub ar y cyfle i esbonio'r astudiaethau amgylcheddol y byddwn ni'n eu cynnal er mwyn helpu i lywio nifer a lleoliad y tyrbinau gwynt yn Fferm Wynt arfaethedig Mynydd y Glyn.

Os gwelwch yn dda, sylwch ein bod yn gynnar iawn yn y prosiect ac na allwn ddarparu gwybodaeth am effaith weledol bosibl gan nad yw lleoliad y tyrbinau gwynt wedi'i bennu eto. Fodd bynnag, byddem yn croesawu eich meddyliau ar safbwyntiau allweddol yn yr ardal, fel y gallwn ystyried y rhain wrth inni ddatblygu ein cynlluniau.

Rydym wedi ymrwymo i hysbysu, ymgysylltu ac ymgynghori â chymunedau lleol a rhanddeiliaid trwy'r broses ddylunio a chynllunio ac edrychwn ymlaen at glywed eich barn a'ch awgrymiadau.



Uchod: Cynllun lleoliad y safle

Ynglŷn â Pennant Walters

Mae Pennant Walters yn is-gwmni i Walters Group, cwmni lleol wedi'i leoli yn Hirwaun ac yn gweithredu'n genedlaethol. Mae Walters yn cyflogi tua 500 o bobl ac mae wedi arallgyfeirio'n sylweddol yn yr 20 mlynedd diwethaf.

Ers 2003, rydym wedi datblygu, adeiladu ac erbyn hyn yn gweithredu chwe fferm wynt a rhywfaint o ynni solar yn Ne Cymru, gan gynhyrchu cyfanswm o 127MW, gan ein gwneud yn ddatblygwyr ynni adnewyddadwy cartref mwyaf Cymru.

I weld rhagor o wybodaeth, ewch i www.pennantwalters.co.uk

Pam mae angen ffermydd gwynt arnom

Ym mis Ebrill 2019, cyhoeddodd Llywodraeth Cymru a gyfwrng hinsawdd a chyhoeddodd ei Dyfodol Cymru: Y Cynllun Cenedlaethol 2040, a fawrwyddwyd ar ddechrau 2021. Mae safle Mynydd y Glyn yn Rhondda Cynon Taf yn gorwedd drws nesaf i Ardal a Aseswyd ymlaen llaw ar gyfer darparu ffermydd gwynt.

Er bod llawer o gynghoraau a'r Nghymru wedi datgan argyfwng hinsawdd, mae Cyngor Bwrdeistref Sirol Rhondda Cynon Taf wedi nodi nad yw'n gweld unrhyw rinwedd mewn datgan argyfwng ac mae'n canolbwyntio yn lle hynny ar y mesurau sy'n ofynnol i fynd i'r afael ag ef. Mae'r rhain yn cynnwys sbectol a'i gyflenwad ynni cynaliadwy gwynt ddi-hun trwy ffermydd gwynt ac ynni solar gan atochau bod pob cerbyd neu'r gyfnewid i'r amgylchedd a phosibl, hysbwydo mathau mwy cynaliadwy o gludant fel cerdded, beicio a thrafnidiaeth gyhoeddus, a rhaglen planu coed.

Gan y bydd fferm wynt arfaethedig Mynydd y Glyn yn cynhyrchu mwy na 10MW o drydan fe'i diffinnir fel Datblygiad o Anwyddoedd Cenedlaethol (DNS). Mae hyn yn golygu y bydd y cais cynllunio yn cael ei gyflwyno i'r Arolygiaeth Gynllunio (PINS) ar gyfer Cymru a'i ystyried gan Arolygydd gyda'r penderfyniad terfynol yn cael ei wneud gan Weimidogion Cymru.

Cwestiwn:

A ydych chi'n cefnogi'r egwyddor o ffermydd gwynt i gynhyrchu ynni adnewyddadwy?



Y safle

Mae'r safle yng Nghyngor Bwrdeistref Sirol Rhondda Cynon Taf ac mae wedi'i leoli ar lwyfandir yn ucheldir gydag ochrau ar oledf sêrth i'r gorllewin o Bonhyppid. Ar ei bwyt agosaf mae'r safle oddeutu 17km i'r de o Barc Cenedlaethol Bannau Brycheiniog.

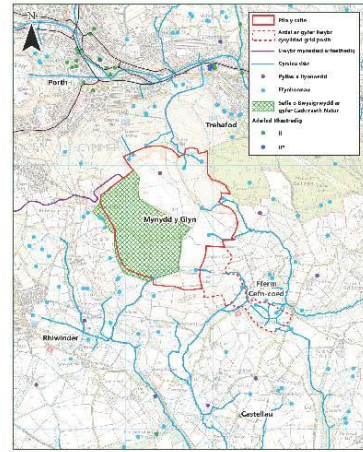
Mae'r safle, fel y'i diffinnir ar hyn o bryd, yn ymestyn i oddeutu 200 heddar, sef glaswelltir a ddefnyddir yn bennaf ar gyfer pon. Mae safle Mynydd y Glyn yn Rhondda Cynon Taf yn gorwedd i'r gogledd o Ardal a Aseswyd ymlaen llaw ar gyfer darparu ffermydd gwynt.

Mae polisi'r llywodraeth, fel y nodwyd yng Nghymru'r Dyfodol, y cynllun cenedlaethol 2040 yn darparu fframwaith polisi cadarnhaol ar gyfer ynni adnewyddadwy.

Oherwydd y gefnogaeth bolisi cadarnhaol hon a'r ffaith bod Fferm Wynt arfaethedig Mynydd y Glyn grym bellter o Fannau Brycheiniog ac unrhyw Ardal o Harddwch Naturiol Eithriadol y mae Pennant Walters o'r farn y gallai'r safle fod yn addas ar gyfer fferm wynt ar y tir.

Bydd astudiaethau ac ymchwiliadau pellach yn helpu i sefydlu a ddaswydd y safle yn erbyn ystod eang o feini prawf amgylcheddol.

Mae safle'r fferm wynt arfaethedig yn cynnwys llwyfandir o laswelltir asid lled-well helaeth a ddefnyddir ar gyfer pon.



Above: Indicative Site Constraints Plan

Defnyddir y dirwedd ehangach o amgylch y safle yn bennaf ar gyfer pori gyda choetir conwydd planhigfa yn cael ei reoli ar gyfer coedwigaeth ac aneddiadau trefol bach.

Mae angen i ni ystyried nifer o gyfyngiadau wrth inni ddatblygu'r cynigion ar gyfer Fferm Wynt Mynydd y Glyn.

Yn ystod y flwyddyn hon, bydd arolygon amgylcheddol yn parhau i gael eu cynnal a byddant yn ein helpu i leihau arwynebedd y safle datblygu er mwyn osgoi nodweddion a allai fod yn sensitif.

Cwestiwn:

A oes unrhyw gyfyngiadau eraill y credwch y dylem eu hystyried wrth i ni ddatblygu'r cynigion ar gyfer Fferm Wynt Mynydd y Glyn?



Y cynigion

Ar ffyn o bryd, mae ein cynigion ar gyfer Fferm Wynt Mynydd y Glyn yn cynnwys:

- Hyd at saith ty bliŵ gwyn gydag uchder llafn uchaf o 180 ft
- Tali is-o saf a chwastrwydydd
- Aerial adelladau dros dro
- Sweydd fwydd safle adelladau dros dro
- Pediau craen a chublau
- Adeiladu trac mynediad
- Adeiladu gweliannau ar gyfer mynediad trassafle

Amcangyfrifir y bydd y Fferm Wynt yn cynhyrchu hyd at 42MWh o drydan, sy'n cyfateb i adarau dŵi gon o bŵer i oddeutu angierion trydan blyneddol, oddeutu 37,000 o gartrefi.

Dyniwyd y Fferm Wynt gydag oes weithredol o 30 mlynedd, gan allforio ynniad newydd i ddyddiad Cenedlaethol.

Mae gan Pennant Walters gynig derbyn oloddi wrth Western Power Distribution am gysylltiad 33kV yn Upper Boat. Byddai'r cysylltiad yn cynnwys 1.5km o ffrwyd newydd ar bolion pren a 7.5km arall o dan y ddauaernewyddwch yn y ffrwydwaith priffymd.



Cwestiwn:
Beth yw eich meddyliau cychwynnol ar ein cynigion sy'n dod i'r amlwg ar gyfer Fferm Wynt Mynydd y Glyn?

Amgylcheddol

Rydym wedi cyflwyno Adroddiad Cwmpas Amgylcheddol i Bender-y-nladau Cynllunio ac Amgylchedd Cymru ar mwyn sefydlu'r adarau madau ar gyfer yr Aseidiad o'r Lloedd Amgylcheddol (AA), a fydd yn cyd-fynd â'r cais.

Mae'r adroddiad ffrwyd yn cynnwys cytuno ar gwrpas ynniad ac achau sydd eu hangen ag ymgynghorion gan gynnwys y Cymor.

Bydd penodau allweddol yr AA yn ymddiriedolaeth:

- Lloedd ar ynniad ac effaith weiddol
- Ynniad hanesyddol
- Bioamrywiaeth
- Adeiladu
- Ynniad hanesyddol
- Cychwynnol
- Tali ffrwyd a chublau
- Sŵn
- Seilwaith
- Economeg Cymdeithasol
- Ynniad hanesyddol ac iechyd pobl

Gellir gweld ym Adroddiad Cwmpas Amgylcheddol ar wefan y presiect: www.mynydd-y-glyn.co.uk

Mae bywyd goyft sy'n cael ei arolygu'n cynnwys moeth daer, ys,umed, dyfrwng, llygod y dŵr, madau lod crnog mawr, ymlusgiaid ac adau. Bydd arolygu'n helpu i ymchwilio i'r amgylchedd dŵr o'r oes hon a phirce-oldeb mawr.

Mae gorffwrthwr cynnwys ariannol ariannol i'r cychwynnol o sŵn, a nododd fod gan y safle'r potensial i ddarparu ar gyfer Fferm Wynt fasnachol modern.

Cynheli'r rhagor o astudiaethau mawr ym awr i schyd i'r Lloeddau gorau ar gyfer ynniad a fydd yn cael yr elfeithiau sŵn lleiaf posibl ar ddyddion. Jool a do bynyddion allweddol.

Bydd arolygu yn parhau i mewn i 2022 a bydd y canlyniadau'n helpu'r Aseidiad Amgylcheddol a gyflwynu'r gyda'r cais cynllunio.

Cwestiwn:

A oes unrhyw effeithiau amgylcheddol penodol y credwch y dylem fod yn ymwybodol ohonynt wrth i ni ddatblygu ein cynigion?



Trafnidiaeth a mynediad

Bydd masnach ffyniadau trafïg sy'n gysylltiedig â Ffyniadau Ffynedd y Glyn yn cael eu cynhyrchu yn ystod y cyfnod adeiladu. Unwaith y bydd yr weithredol, disgwyliwyd byddiadau trafïg sy'n gysofftiedig i'r cymnwl a chadw ac atgweithiadau yn fachi lawr. Mae ymweiliadau ac iysurol yn debygol o gael eu genned gan gebydau 4x4 neu rai tebyg ac efallai y bydd angen ac iysurol i gerbydau wyddau, trefm i'r Gŵ gael mynediad i'r safle.

Yn ystod y cyfnod adeiladu, rhagweliwyd byddiadau Lwythi A'wahanadwy. Anghyffwrdd yn cludo'r cyfa par tyrbinau i'r safle ar y ffordd o na' Tai Port'nadd Abo'tawe neu i'ysu.

Assesiry potensial a'r effeithiau ac odefnyddwyd ffyrdd unwaith y byddiadau gebydau adeiladu wedi'i garddm h'u. Byddiadau adeiladu, i'ascolad hwn hofyd y'cael eu cy'nywys y' Assesud o'r Effai't. Amgylcheddol.

Cwestiwn:

A oes unrhyw ffyrdd y byddech chi'n poeni amdanom ni'n eu defnyddio i gludo'r offer tyrbinau? Os felly, rhowch wybod i ni pam.

Buddion i'r Gymuned

Mae'r cymunedau y mae o'n ffyniadau ffynedd y' gweithredu ynddynt yn debygol i ni. Bydd y'n gweithredu Cronfa Gymunedol ar gyfer pob un o'n brosiectau ffynedd gwynt, sy'n buddsoddi arian yn y cymunedau lleol.

Hyd yn hyn rydym wedi dosbarthu o ddiwedd £4 milien i brosiectau cymwys.

Mae hyn wedi cynhyso:

- adnewyddu ardaloedd chwarae
- trosi cyrtiau tenis yn Ardaloedd Gemau Aml-ddeinydd
- cyflwyni offer i glybiau chwaraeon
- prosiectau a'r gylchreddol a bywyd gwyllt
- aschraiddio lwybrau troed
- parciau sgleffio

Mae rhagor o wybodaeth am y' arian a roddi'n ni sa' lloedd eraill ar dudalennau'r safleoedd a'r gylchyma: www.pennantwalters.co.uk

Tol rhan o'r ymgysylltu cymhar ar gyfer Ffynedd y Glyn, he'f o'n gylchred eich barn am berchnogaeth leol a sut y gellir gweithredu'r Cronfa Gymunedol sy'n gysylltiedig â'r Ffyniadau Ffynedd y' gweithredu. Rydym yn ystyried nifer o brosiectau, un yw sefydlu Cwmni Buddiantau Cymunedol (CRC) i ddyrannu cyllid yn ffynedd, brosiectau cymwys leol.

Cwestiwn:

Beth ydych chi'n ei feddwl am gyfleoedd budd cymunedol i Ffynedd y Glyn, fel perchnogaeth leol a'r potensial i Gwmni Buddiant Cymunedol reoli Cronfa Budd Cymunedol?



Dweud eich dweud

Er bod y cais cynllunio yn Ddatblygiad o Arwyddocâd Cenedlaethol (DNS) ac yn y pen draw bydd Gweinidogion Cymru yn penderfynu arno, mae Cyngor Bwrdeistref Sirol Rhondda Cynon Taf a'r cymunedau lleol yn ymgynghoreion allweddol a byddwn yn ymgymryd ag ymgysylltu ac ymgynghori helaeth â chynghorwyr lleol, rhanddeiliaid a thrigolion ar ein cynlluniau sy'n dod i'r amlwg.

Mae'r cam cyntaf hwn o ymgysylltu â'r cyhoedd ar gynigion ar gyfer Fferm Wynt Mynydd y Glyn wedi'i gynllunio i gyflwyno'r prosiect a galluogi pawb sydd â diddordeb yn ein cynlluniau sy'n dod i'r amlwg i ymgysylltu a rhannu eu meddyliau a'u syniadau gyda ni.

Llenwch y ffurflen adborth ar wefan y prosiect – www.mynydd-y-glyn.co.uk – neu cysylltwch â ni drwy ddefnyddio'r manylion isod.

Gadewch i ni gael eich adborth erbyn 30 Tachwedd 2021.

Bydd y sylwadau a dderbynnir yn cael eu hadolygu a'u defnyddio i lywio'r cynigion sy'n dod i'r amlwg. Yna cewch gyfle i wneud sylwadau ar y cynigion manwl ar gyfer Fferm Wynt Mynydd y Glyn yn ddiweddarach yn y flwyddyn, cyn i ni gwblhau a chyflwyno cais cynllunio yn Hydref 2022.

Manylion cyswllt

Hoffem glywed eich barn ar y cynigion sy'n dod i'r amlwg ar gyfer Fferm Wynt Mynydd y Glyn. Rhowch wybod eich barn cychwynnol trwy:

- Galw: **01443 548032**
- Ebostiwch: consultation@mynydd-y-glyn.co.uk
- Ysgrifennwch at: **Freepost GRASSHOPPER CONSULT** (nid oes angen stamp na chyfeiriad ychwanegol)

Bydd y manylion cyswllt hyn yn eich rhoi mewn cysylltiad â Grasshopper Communications, sy'n rheoli'r ymgynghoriad.

Llinell amser dangosol y prosiect

Hydref 2021:	Ymgysylltu cynnar ar gynigion sy'n dod i'r amlwg
Gwanwyn/ Haf 2022	Ymgynghoriad statudol ar gynllun manwl y Fferm Wynt arfaethedig
Hydref 2022	Cyflwyno Cais DNS i Penderfyniadau Cynllunio ac Amgylchedd Cymru
Gwanwyn/ Haf 2023	Archwilio'r cais a chyflwyno'r adroddiad/argymhelliad i Lywodraeth Cymru
Hydref/Gaeaf 2023	Gweinidogion Cymru'n penderfynu ar y cais

Byddai'r gwaith i adeiladu Fferm Wynt Mynydd y Glyn yn cymryd oddeutu dwy flynedd, felly gellid datblygu'r Fferm Wynt a chynhyrchu trydan erbyn Gaeaf 2025.



Pennant Walters is developing proposals for a wind farm on a site at Mynydd y Glyn, 3km to the west of Pontypridd in Rhondda Cynon Taf.

The views of the local community are important to us and, as we start the project, we want to introduce ourselves and provide information about our emerging proposals.

We also want to take the opportunity to explain the environmental studies we'll be undertaking to help inform the number and location of the wind turbines in the proposed Mynydd y Glyn Wind Farm.

Please note, we are at a very early stage of the project and are not able to provide information about potential visual impact as the location of the wind turbines has not been determined yet. We would, however, welcome your thoughts on key viewpoints in the area, so we can take these into consideration as we develop our plans.

We are committed to informing, engaging and consulting with local communities and stakeholders through the design and planning process and look forward to hearing your views and suggestions.



Above: Site Location Plan

About Pennant Walters

Pennant Walters is a subsidiary of Walters Group, a local company based at Hirwaun and operating nationally. Walters Group employ around 500 people and has diversified significantly in the last 20 years.

Since 2003, we have developed, built and now operate six wind farms and some solar in South Wales, generating a total of 127MW, making us Wales' largest home-grown renewable energy developer.

For more information, visit: www.pennantwalters.co.uk

Why we need Wind Farms

In April 2019, the Welsh Government declared a climate emergency and published its Future Wales: The National Plan 2040, which was adopted at the start of 2021. The Mynydd y Glyn site in Rhondda Cynon Taf lies adjacent to an identified Pre-Assessed Area for the provision of wind farms.

While many county councils in Wales have declared a climate emergency, Rhondda Cynon Taf County Borough Council has stated it sees no merit in declaring an emergency and is focussing instead on the measures required to tackle it. These include creating its own green sustainable energy supply through wind farms and solar-powered energy, ensuring all vehicles are as environmentally friendly as possible, promoting more sustainable forms of transport such as walking, cycling and public transport, and a tree-planting programme.

As the proposed Mynydd y Glyn Wind Farm will generate more than 10MW of electricity it is defined as a Development of National Significance (DNS). This means that the planning application will be submitted to the Planning and Environment Decisions Wales (formerly Planning Inspectorate for Wales) and considered by an Inspector with the final decision made by Welsh Ministers.

Question:

Do you support the principle of wind farms to generate renewable energy?



The site

The site lies within Rhondda Cynon Taf and is located on an upland plateau with steep sloping sides to the west of Pontypridd. At its closest point, the site is approximately 17km south of the Brecon Beacons National Park.

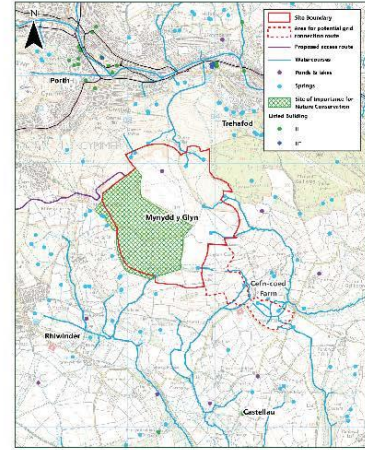
The site as currently defined extends to approximately 200 hectares, which is predominantly grassland used for grazing. Mynydd y Glyn lies to the north of Pre-assessed Area 9 for wind energy. The nearest settlements are Forth, Trebanog, Tonyrefail and Trehafod.

Government policy, as set out in Future Wales: The National Plan 2040, provides a positive policy framework for renewable energy.

It is because of this positive policy support and the fact that the proposed Mynydd y Glyn Wind Farm is some distance from the Brecon Beacons and any Area of Outstanding Natural Beauty that Pennant Walters considers that the site could be suitable for an onshore wind farm.

Further studies and investigations will help establish the site's suitability against a wide range of environmental criteria.

The site of the proposed Mynydd-y-Glyn Wind Farm comprises a plateau of extensive semi-improved acid grassland used for grazing livestock. The wider landscape surrounding the site is predominantly used for livestock grazing with plantation conifer woodland managed for forestry and small urban settlements.



Above: Indicative Site Constraints Plan

There are a number of constraints that we need to take into account as we develop the proposals for Mynydd y Glyn Wind Farm.

Over the course of this year, environmental surveys will continue to be undertaken and they will help us to reduce the area of the development site to avoid potentially sensitive features.

Question:

Are there any other constraints that you think we should take into consideration as we develop the proposals for the Mynydd y Glyn Wind Farm?



The proposals

Currently, our proposals for the Mynydd y Glyn Wind Farm include:

- up to seven wind turbines with a maximum blade height of 180m
- substation and transformer housing
- temporary construction compound
- temporary construction site offices
- crane pads and cabling
- access track construction
- Construction improvements for an access to site

It is estimated that the Wind Farm will generate up to 42MWh of electricity, which is equivalent to providing enough power to meet the annual electricity needs of approximately 37,000 homes.

The Wind Farm will be designed with an operational life of 30 years, exporting renewable energy to the National Grid.

Pennant Wales has an accepted grid offer from Western Power Distribution for a 33kV connection at Upper Boat. The connection is likely to comprise 1.5km of new line on wooden poles and a further 7.5km underground via ducting in the highway network.



Question:
What are your initial thoughts on our emerging proposals for Mynydd y Glyn Wind Farm?

Environmental

We have submitted an Environmental Scoping Report to Planning and Environmental Decisions Wales to establish the parameters for the Environmental Impact Assessment (EIA), which will accompany the application.

This report seeks to agree the scope of the studies needed with consultees including the Council.

Key chapters of the EIA will cover:

- Landscape and visual impact
- Historic environment
- Biodiversity
- Ornithology
- Water environment
- Ground conditions
- Traffic and transport
- Noise
- Infrastructure
- Socioeconomics
- Population and human health

The Environmental Scoping Report can be viewed on the project website: www.mynydd-y-glyn.co.uk

We have already undertaken a number of environmental surveys, which focussed on establishing a baseline of current ecological and ornithological conditions in and around the site. Initial results suggest that the site is a typical upland area, with some areas of habitat designated for their ecological importance.

Wildlife being surveyed includes hedgehogs, bats, dormouse, otter, water voles, great crested newt, reptiles and birds. Surveys will also investigate the current water environment, ground conditions and the presence of peat.

Additional early work undertaken also includes an initial assessment of noise, which indicated the site has the potential to accommodate a modern commercial wind farm.

Further detailed studies will help establish the best locations for the turbines, which will have minimal noise impacts on local residents and key receptors.

Surveys will continue into 2022 and the results will form part of the Environmental Statement that will be submitted with the planning application.

Question:

Are there any other environmental issues you think we should be aware of as we develop our proposals?



Transport and access

The majority of traffic movements associated with the Mynyddy Glyn Wind Farm will be generated during the construction phase. Once operational, traffic movements associated with maintenance and repairs are expected to be minimal. Occasional visits are likely to be made by 4x4 vehicles or similar and there may be an occasional need for a heavy goods vehicle (HGV) to access the site.

During the construction phase, it is anticipated that Abnormal In Dimension Loads (AILs) will transport the turbine equipment to the site by road from the port of Swansea or Bristol.

The potential for impacts upon road users will be assessed once the routing of construction vehicles is confirmed. The results of this assessment will also be included within the LIA.

Question:

Are there any roads you would be concerned about us using to transport the turbine equipment? If so, please let us know why.

Community benefits

The communities in which our wind farms operate are important to us. We operate a Community Fund for each of our wind farm projects, which invests money into the local communities.

To date we have distributed around £4 million to qualifying projects.

This has included:

- Refurbishing play areas
- Converting tennis courts into Multi-Use Games Areas (MUGAs)
- Supplying equipment to sports clubs
- Environmental and wildlife projects
- Upgrades to footpaths
- Skate parks

More information on the funding given to our other sites can be found on the individual site's page at: www.pennantwalters.co.uk

As part of the early engagement for Mynyddy Glyn, we would like to hear your views about local ownership and how the Community Fund linked to the Wind Farm can be most effectively administered. There are a number of options we are considering, one is to set up a Community Interest Company (CIC) to allocate funds annually to local, qualifying projects.

Question:

What do you think about community benefit opportunities for Mynyddy Glyn Wind Farm, such as local ownership and the potential for a Community Interest Company to manage a Community Benefit Fund?



Have your say

Although the planning application is a Development of National Significance (DNS) and will ultimately be determined by Welsh Ministers, Rhondda Cynon Taf County Borough Council and the local communities are key consultees. We will be undertaking extensive engagement and consultation with local councillors, stakeholders and residents on our emerging plans.

This first phase of public engagement on proposals for Mynydd y Glyn Wind Farm is designed to introduce the project and enable all those interested in our emerging plans to engage and share their thoughts and ideas with us.

Please complete the feedback form on the project website – www.mynydd-y-glyn.co.uk – or contact us using the details below.

Please let us have your feedback by 30 November 2021.

Comments received will be reviewed and used to inform the emerging proposals. You will then have a chance to comment on the detailed proposals for Mynydd y Glyn Wind Farm later in the year, before we finalise and submit a planning application in Autumn 2022.

Contact us

We would like to hear your views on the emerging proposals for the Mynydd y Glyn Wind Farm. Please let us know your initial thoughts by:

- Completing the feedback form at the public exhibition or online at: www.mynydd-y-glyn.co.uk
- Calling **01443 548032**
- Emailing consultation@mynydd-y-glyn.co.uk
- Write to **Freepost GRASSHOPPER CONSULT** (no stamp or further address required)

These contact details will put you in touch with Grasshopper Communications, who are managing the consultation.

Indicative project timeline

Autumn 2021	Early engagement on emerging proposals
Spring/Summer 2022	Statutory consultation on detailed layout of proposed Wind Farm
Autumn 2022	DNS application submitted to Planning and Environment Decisions Wales
Spring/Summer 2023	Examination of application and report/recommendation submitted to Welsh Government
Autumn/Winter 2023	Welsh Ministers determine application

The construction of the Mynydd y Glyn Wind Farm would take around two years, so the Wind Farm could be developed and generating electricity by Winter 2025.

Appendix 6 – Press/media release

For immediate release

HAVE YOUR SAY ON RHONDDA WIND FARM PLANS

People living in the vicinity of Mynydd y Glyn in Rhondda Cynon Taf are being invited to find out more and have their say on emerging plans for a wind farm that could provide enough power to meet the electricity needs of approximately 32,000 homes a year.

Pennant Walters propose up to seven wind turbines, with a maximum blade height of 180m on the site, 3km to the west of Pontypridd. The site is situated on an upland plateau with steep sloping sides, extending to around 200 hectares and is currently mostly grassland used for grazing.

The wind farm could generate up to 42 MW of electricity, which could help Wales tackle the climate emergency and meet Welsh Government's renewable energy objectives.

Pennant Walters wants to develop long-lasting relationships with its communities and is carrying out early engagement to give local people the chance to find out more and discuss the proposals with members of the project team.

All feedback will then be reviewed and used to help inform the number and location of the turbines proposed, which has not been determined yet. The detailed proposals will form the basis of the more detailed statutory consultation next Spring/Summer.

Dale Hart, managing director of Pennant Walters, said: "We believe that the Mynydd y Glyn Wind Farm could make a significant contribution to Rhondda Cynon Taf County Borough Council's renewable energy targets in the immediate future, while delivering wider benefits to the surrounding communities over the next 30 years.

"We place great value in the communities in which we operate and look forward to hearing the thoughts and ideas of local residents and stakeholders as we develop our proposals."

Public exhibitions are being held:

2pm to 8pm on Thursday, 11 November at **Capel Community Resource Centre**, Tonyrefail, and
10am – 2pm on Saturday, 13 November at **Waun Wen Community Recreation Centre**, Trebanog.

As some form of Covid restrictions may be in place at the time, organisers are asking that you **register your interest in advance** so they can contact you with any safety requirements and a timeslot before the event. Please email consultation@mynydd-y-glyn.co.uk or call 01443 548032.

Alternatively, you can visit the virtual exhibition online (from 11 November) and give your feedback via the project website: www.mynydd-y-glyn.co.uk. Please submit your comments **by 30 November 2021**.

The communities in which Pennant Walters develops and operates wind farms are a key priority and each wind farm operates a community fund that invests money into the surrounding local communities. To date, Pennant Walters has distributed some £4million pounds to qualifying projects.

To find out more and sign up for updates on the proposals, visit www.mynydd-y-glyn.co.uk

- Ends -

Notes to Editors:

1. Pennant Walters is Wales's largest indigenous renewable energy provider and is part of the Walters Group based in Hirwaun, which employs up to 500 members of staff.
2. Since 2003, Pennant Walters has developed, built and now operates six wind farms in South Wales along with some solar for a total 127MW, making it Wales' largest home-grown renewable energy developer.
3. Details of the request for a Scoping Opinion will be available at: <https://gov.wales/planning-and-environment-decisions-wales>
4. For more information, please contact Bethan Harrington at Grasshopper Communications on 07585 449160 or bethan@grasshopper-comms.co.uk

Appendix 7 – Newspaper advertisement

Rhondda Leader 04 November 2021 (Thursday)

Section: Main, Edition: 1ST, Page: 7, URN: 226149093-01, Size:

Published by Reach, Cardiff

facebook.com/WalesOnline THURSDAY, NOVEMBER 4, 2021 PONTY AND RHONDDA 7

News

No official festive lights switch-on for second year

PONTYPRIDD won't see a Christmas lights switch-on event for the second year running.

The town council has confirmed that the lights will be switched on in mid-November, but there won't be an official switch-on event this year due to high infection rates at the ongoing coronavirus pandemic.

The decision has been taken to avoid crowds gathering, with the Covid-19 situation still ongoing.

A date for when the town will officially light up for the festive season is yet to be confirmed, but Pontypridd Town Council has said further investment has been made into the lights this year in the hope the



Crews at a previous Pontypridd Christmas lights switch-on. The event will not be taking place this winter for the second year running.

KATIE-ANN GUPWELL
Reporter
katie.ann.gupwell@walesonline.co.uk

town will be shining brightly for Christmas.

This year additional areas will be included in the festive glow, with the Christmas lights now extending to Tall Street, Market Avenue and Church Street.

In addition, Pontypridd Museum will also see a special visit from the team in aid of Santa's Gnomes will run at the venue on November 27, December 8, December 11 and December 18 from 11am until 3pm.

A visit to the gnomes will cost 50p per child.

All money will be donated to the Mayor's Charity Appeal.

The town will also see the return of the family Christmas meals this year, where a Victorian-themed treat will run through the town centre.

Between Christmas and New Year there will also be a 22 Days of Christmas Trail on Pontypridd Common. More details about the trail will be revealed soon.

Pontypridd Town Mayor Carl Thomas said: "These past two years have been incredibly tough on all residents of Pontypridd.

"We want to bring back the cheer of Christmas and celebrate the season with our community, which has shown amazing resilience.

"We're looking forward to safely sharing the joys of Christmas with you all once again."



Mynydd y Glyn Wind Farm proposals - early engagement

Pennant Walters is developing proposals for a wind farm on a site at Mynydd y Glyn, 3km to the west of Pontypridd. To discuss the emerging proposals with members of the project team, please come along to our public exhibitions:

<p>Thursday, 11 November 2pm - 8pm</p> <p>Capel Community Resource Centre Heol Ty Llwyd, Tonyrefail CF39 8LW</p>	<p>Saturday, 13 November 10am - 2pm</p> <p>Wauw Wen Community Recreation Centre Rhiwgam Rd, Trebanog CF39 9LX</p>
---	--

As some form of Covid restrictions may be in place at the time of the public exhibition, please register to attend in advance and let us know your preferred time/date.

Call: 01443 548032
Email: consultation@mynydd-y-glyn.co.uk

Alternatively, you can view the exhibition online (from 11 November). Please submit your comments by 30 November 2021.

Cynigion fferm wynt Mynydd y Glyn - ymgysylltiad cynnar

Mae Pennant Walters yn datblygu cynigion ar gyfer fferm wynt ar safle ym Mynydd y Glyn, 3km i'r gorllewin o Bontypridd. I drafod y cynigion gydag aelodau o dîm y prosiect, dewch i'n harddangosfeydd cyhoeddus:

<p>Dydd Iau, 11 Tachwedd 2pm - 8pm</p> <p>Canolfan Adnoddau Cymunedol Capel Heol Ty Llwyd, Tonyrefail CF39 8LW</p>	<p>Dydd Sadwrn, 13 Tachwedd 10am - 2pm</p> <p>Canolfan Hamdden Gymunedol Wauw Wen Rhiwgam Rd, Trebanog CF39 9LX</p>
---	--

Gan y gallai rhyw fath o gyfyngiadau Covid fod yn eu lle ar adeg yr arddangosfa gyhoeddus, cofrestrwch i ddod ymlaen llaw a gadewch ni wybod yr amserdyddiad sydd orau gennych.

Ffôn: 01443 548032
E-bost: consultation@mynydd-y-glyn.co.uk

Fel awl, gallwch weld y byrddau arddangosfa'n eiddo 11 Tachwedd. Cyflwynwch eich sylwadau erbyn 30 Tachwedd 2021.

www.mynydd-y-glyn.co.uk

Appendix 8 – Community poster



Mynydd y Glyn

PENNANT
WALTERS

Mynydd y Glyn Wind Farm proposals – early engagement

Pennant Walters is developing proposals for a wind farm on a site at Mynydd y Glyn, 3km to the west of Pontypridd. To discuss the emerging proposals with members of the project team, please come along to our **public exhibitions:**

Thursday, 11 November
2pm – 8pm

**Capel Community Resource
Centre**
Heol Ty Llwyd, Tonyrefail
CF39 8LW

Saturday, 13 November
10am – 2pm

**Waun Wen Community
Recreation Centre**
Rhiwgarn Rd, Trebanog
CF39 9LX

As some form of Covid restrictions may be in place at the time of the public exhibition, **please register to attend in advance** and let us know your preferred time/date.

Call: **01443 548032**

Email: **consultation@mynydd-y-glyn.co.uk**

Alternatively, you can view the exhibition online (from 11 November). Please submit your comments by **30 November 2021**.

Cynigion fferm wynt Mynydd y Glyn – ymgysylltiad cynnar

Mae Pennant Walters yn datblygu cynigion ar gyfer fferm wynt ar safle ym Mynydd y Glyn, 3km i'r gorllewin o Bontypridd. I drafod y cynigion gydag aelodau o dîm y prosiect, dewch i'n **harddangosfeydd cyhoeddus:**

Dydd Iau, 11 Tachwedd
2pm – 8pm

**Canolfan Adnoddau
Cymunedol Capel**
Heol Ty Llwyd, Tonyrefail
CF39 8LW

Dydd Sadwrn, 13 Tachwedd
10am – 2pm

**Canolfan Hamdden
Gymunedol Waun Wen**
Rhiwgarn Rd, Trebanog
CF39 9LX

Gan y gallai rhyw fath o gyfyngiadau Covid fod yn eu lle ar adeg yr arddangosfa gyhoeddus, **cofrestrwch i ddod ymlaen llaw** a gadewch i ni wybod yr amser/dyddiad sydd orau gennych.

Ffoniwch: **01443 548032**

Ebostiwch: **consultation@mynydd-y-glyn.co.uk**

Fel arall, gallwch weld y byrddau arddangos ar-lein (o 11 Tachwedd). Cyflwynwch eich sylwadau erbyn **30 Tachwedd 2021**.

www.mynydd-y-glyn.co.uk

Appendix 9 – Community Benefits workshop notes

Mynydd y Glyn Community Benefits Fund Workshop

Date: 27 September 2022

Location: Online (via Zoom)

Project Team

- Meryl Lewis, Pennant Walters
- Clare Jones, Grasshopper Communications
- Sean Clarke, Grasshopper Communications

Over 50 community representatives were invited by email to participate in the workshop. Invitees included key local county councillors, planning officers, MPs, MSs, Community and Town Councils, community centres, schools, faith groups, sports clubs, voluntary organisations and scouts.

Of those invited, there were 4 attendees in total, including a member of staff for Heledd Fychan MS, a representative of Interlink RCT, a church representative and representative of Beddau RFC. Rhondda Cynon Taf County Borough Councillors and various community and town councillors who had registered for attendance pulled out just prior to the workshop.

Welcome and introduction

The Community Benefits Fund Workshop was held to give local community stakeholders an opportunity to share experience and ideas for the administration of the MYG Community Benefit Fund, what potential projects it could be used for and to discuss community ownership.

Following introductions and a powerpoint presentation from the project team, the workshop made use of 'Mural', an online collaboration tool which allowed attendees to participate in a visual manner as well as verbally, posting comments to the Mural board. The session began with an icebreaker on the Mynydd y Glyn area before moving on to discuss the administration options, the geographic area of the proposed fund, the types of projects the community would like to see undertaken, what qualifying criteria should be put in place for the Community Benefit Fund and community ownership.

This report provides an overview of the key discussion points and has been sent to attendees to ensure their views have been accurately captured.

Icebreaker

As an introduction, attendees were asked what words came to mind when thinking of the area in which Mynydd y Glyn is located. Discussion generally shifted onto more general introductions by the guests. However, the following points were captured:

- Think of MYG as a church where I can go to sit and enjoy creation. You can see very far from the top – so how far should the community fund's geographical reach go?
- Costs of living and energy, energy efficiency. Assets in the community to help communities, people are struggling in the current context.

Workshop discussion

What prior experience do you have of Community Benefit funds?

- I've been working closely with the Community Council for the church to provide a place of hope for vulnerable people in the community. Previously had funding to improve area outside of church.
- We made sure there were no barriers for small groups – just a simple email to begin with.
- Prior process with Grantscape was very helpful.
- There is lots of value in working with knowledgeable local partners. Some of the CCs had an incredible amount of knowledge on the small groups nearby.

Administration

- Those running the fund need to proactively reach the harder-to-reach organisations themselves.
- Small amounts of money shouldn't be too bureaucratic to access – need to keep the process straightforward.
- Groups need the money when they need the money – should keep the window for receiving funds open at all times.
- Need to protect against favouritism, make sure there's transparency so projects are awarded funds in an equitable way.

- Worthwhile making sure admin is quite light to keep the application process straightforward.
- If you allocate a certain amount of overall funding that isn't reached, what happens?
 - PW response: It would be rolled on year-on-year, though we would prefer to spend it.
- Important to think about costs – for instance one project has a board of directors which is expensive.
- PW could incorporate a CB fund-related polling aspect to the consultation feedback forms.
- You won't get better value for money than using small voluntary organisations – having a prospectus can be too broad.
- People applying for these grants on behalf of organisations will be volunteering and likely have fulltime jobs. Application process should therefore take as little time and stress as possible.
- After the initial enthusiasm, volunteers and community representatives aren't as keen to get involved with the decision making. Very few community members are impartial.
- A ballot system to choose projects is good to raise awareness but isn't sustainable from a practical point of view long term.
- Keep it simple, some small organisations may not have the resources to fill out a huge, complex form.
- Councillors tend to be more risk averse, and approach risk in a bureaucratic manner.
- Having the council running the scheme goes against flexibility and speed because they have so many rules to follow.
- Doesn't think Community Councils and political bodies should have more power than others in the community – otherwise pet projects get financed at the expense of others.
- Running a survey on how to administer the fund might be a good place to start.
- Small, medium, and large projects could be administered differently
- A fund prospectus worked well for Pen Y Cymoedd to engage the community before it launched the fund (it was the process of writing the prospectus which was key to the engagement).
- Reactive, thematic funding is great for being a responsive funder.

Geographic area

- Having strict boundaries can make it more difficult - important to have flexibility.
- What doesn't work well are strict geographical limits that cut across local authority boundaries - it makes everything complicated!
- Have a border but make it fuzzy to ensure flexibility. Previously if the process is too onerous people just give up.
- So long as the guidance is good, it will make the process easier so people can make the best decisions on behalf of the community.
- Fund will be in region of £150k a year - fund total will determine the reach.
- Those closest to site will feel more deserving of fund because they are most affected. However, if the fund is so massive you may want to expand the boundary if you cannot shift the money.
- If you were drawing a line through Pontypridd how would you do that to make sure it's fair?
- Drawing a concentric circle around the valleys and having that as the border is incredibly difficult.
- Ripple Energy have their area as 'RCT-wide'. Would have a look at other boundaries that exist, such as political boundaries.

Type of projects

- Youth - what facilities are there for young people. We throw skate parks at them but what other value can we provide?
- Engaging with the youth to find out what would be best from their perspective.
- What about education - is there scope to work with the schools and purchase items for the schools?
- Opportunity to hold sessions with kids through Beddau RFC or the scout group.
- It's useful for people to know what the funder is interested in funding but it should not be cast in stone.
- Great to have flexibility in terms of type of projects. Strict criteria is unhelpful.

- Energy crisis is hammering communities across the board – situation is going to get desperate.

Qualification criteria

- Best way of working is saying we are only funding those who can evidence that they are working with partners in the community because it encourages collaboration.
- Individual homeowners will be struggling with energy bills, should they be applicable? Too difficult but there can always be not-for-profit organisations in the middle who can pinpoint the most vulnerable themselves.
- RCT have a loan for home improvements scheme related to energy efficiency.
- The criteria should be along the lines of: if you can tell us why the project/ organisation is in need then provide the evidence and we'll support it.
- Pen y Cymoedd provide funding for business, is this something worthwhile? May be worth knowing the communities' view on this.
- Some will like it, some will not.
- Supporting business can get murky – you can still support things like the high street without providing funds for private companies.
- It's worth playing around with the idea of young people getting involved with social enterprise. E.g., Unlimited, Prince's Trust – provide mentoring support to a new enterprise.
- Purple Shoots can provide loans for those looking to set up businesses, these schemes already exist.

Ownership opportunities

- Welsh Government promoting opportunities for shared ownership of wind farms and related schemes.
- Lot of support structures such as Interlink.
- Where we're used to seeing individuals who are looking to grow their project – it's worth supporting them to bring in the new structures.

- There are plenty of people with well paid jobs in the area who might be interested in buying shares.
- There's plenty of appetite for it but someone needs to do a serious bit of work to get it off the ground.
- Not many/any examples in the area but there is an appetite for shared ownership and similar schemes. Community Energy Wales may have more info.
- A community grid network for community venues would be of great interest.
- All community centres in the area would like to put solar panels up, for example.

Other comments (from workshop and the Zoom chat)

- Use the existing support organisations who can provide advice with funding applications.
- I guess most people would want a very open, flexible and simple process, without deadlines or specific targets groups, open to all (from my viewpoint - community and voluntary groups) and the community decides in some way on the best projects based on a simple application. It works best to have different levels of funding for very small and local, to groups who might be larger and operate over a wider area - but best value for money tends to come from small and local.
- While not really into specific groups, young people are an area where everyone agrees need more support in the community... including mental health support and support for young people with additional learning needs.
- Would be good for a dedicated community benefits page on the PW website.
- Connect RCT is a good website for connecting with the community.
- A SWOT analysis of administration options would be useful for the community to consider.

- Most wind farms run with a fund host – in RCT funds are run by housing associations and by Interlink – could that be an option to pursue?